



Panorama of the Sila plateau from the top of Botte Donato - Photo Raffaele Marchio



Tacina valley and mount Gariglione - Photo Raffaele Marchio





Violets (yellow and purple) from the Sila plateau - Photo Raffaele Marchio





Fall Foliage: contrast of colors between the fir and beech trees - Photo Raffaele Marchio





Frozen Lake Manulata, Petronà - Photo Raffaele Marchio



Gorse in bloom - Photo Raffaele Marchio





Mount Giove in autumn - Photo Raffaele Marchio



Deer in the Manulata wildlife park - Photo Raffaele Marchio





The Unicorn waterfall - Photo Raffaele Marchio





Boletus mushroom in a beech forest - Photo Raffaele Marchio





Stream in the upper Soleo Valley - Photo Raffaele Marchio



A refuge for Brigands - Photo Raffaele Marchio





Ampollino lake - Photo Raffaele Marchio



Monumental Tree: “the Chestnut of the Sky”, circumference at the base 13.50 meters - Photo Raffaele Marchio





Sheep that go to pasture guided only by dogs - Photo Raffaele Marchio



Fall Foliage: in the distance the Gariglione peak - Photo Raffaele Marchio





Wild Thyme at 1600 meters above sea level - Photo Raffaele Marchio



Mount Gariglione and the Soleo valley covered with snow - Photo Raffaele Marchio





A Snake at 1650 meters above sea level - Photo Raffaele Marchio





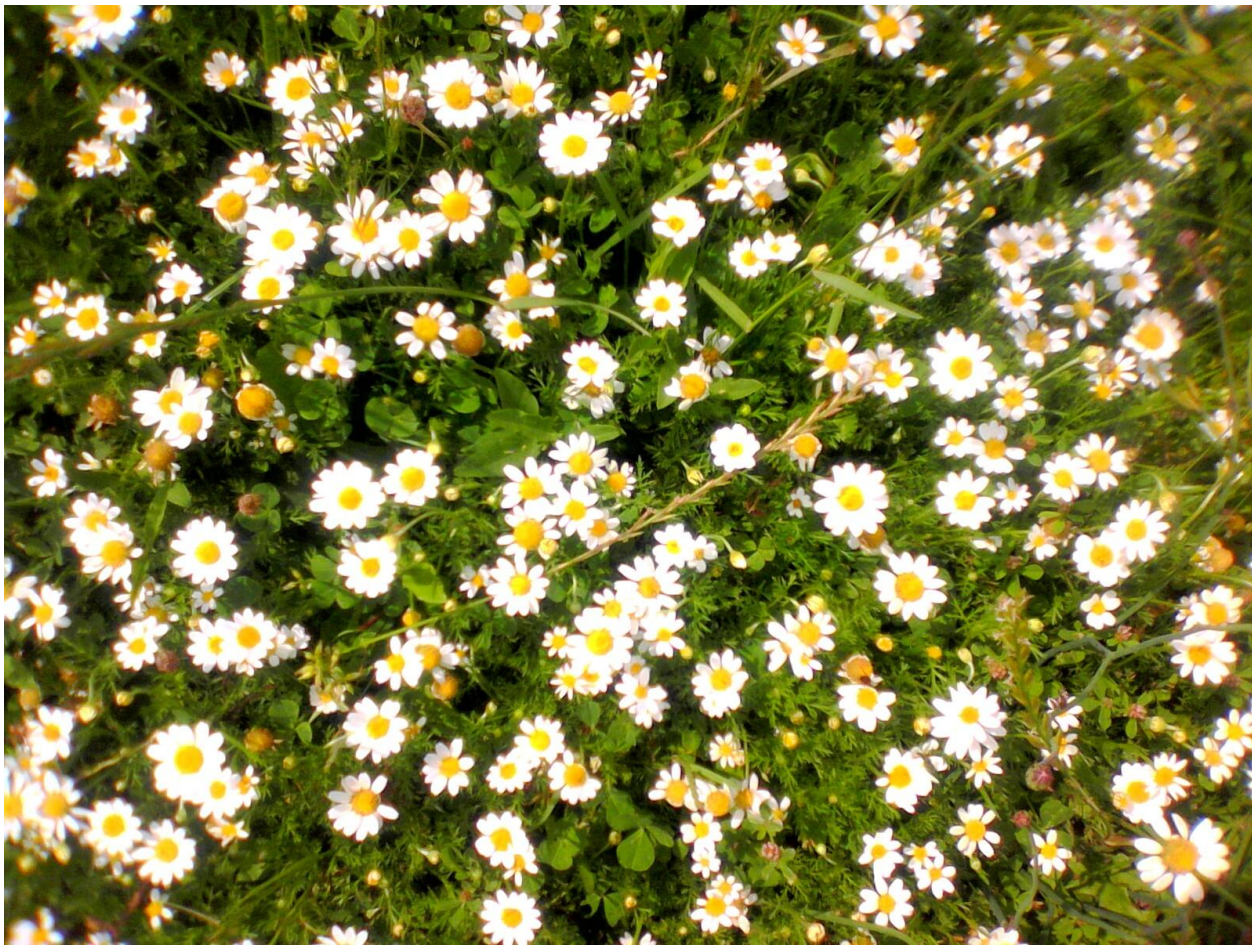
Piciaro valley - Photo Raffaele Marchio





Hazelnut tree branch and and brook in flood - Photo Raffaele Marchio





Wild Chamomile at 1200 meters above sea level - Photo Raffaele Marchio





In the distance the Ionian Sea - Photo Raffaele Marchio



Horses in the wild - Photo Raffaele Marchio





Monoliths in the woods along the Soleo Valley - Photo Raffaele Marchio



Manulata park in autumn, Petronà - Photo Raffaele Marchio





Wild Blackberries - Photo Raffaele Marchio



Wild forest in the upper Soleo valley - Photo Raffaele Marchio





Goats in the Manulata wildlife park - Photo Raffaele Marchio



Fall Foliage: variety of autumn colors - Photo Raffaele Marchio





Mouth of the Unicorn waterfall - Photo Raffaele Marchio



Fall Foliage: chestnut trees in autumn - Photo Raffaele Marchio





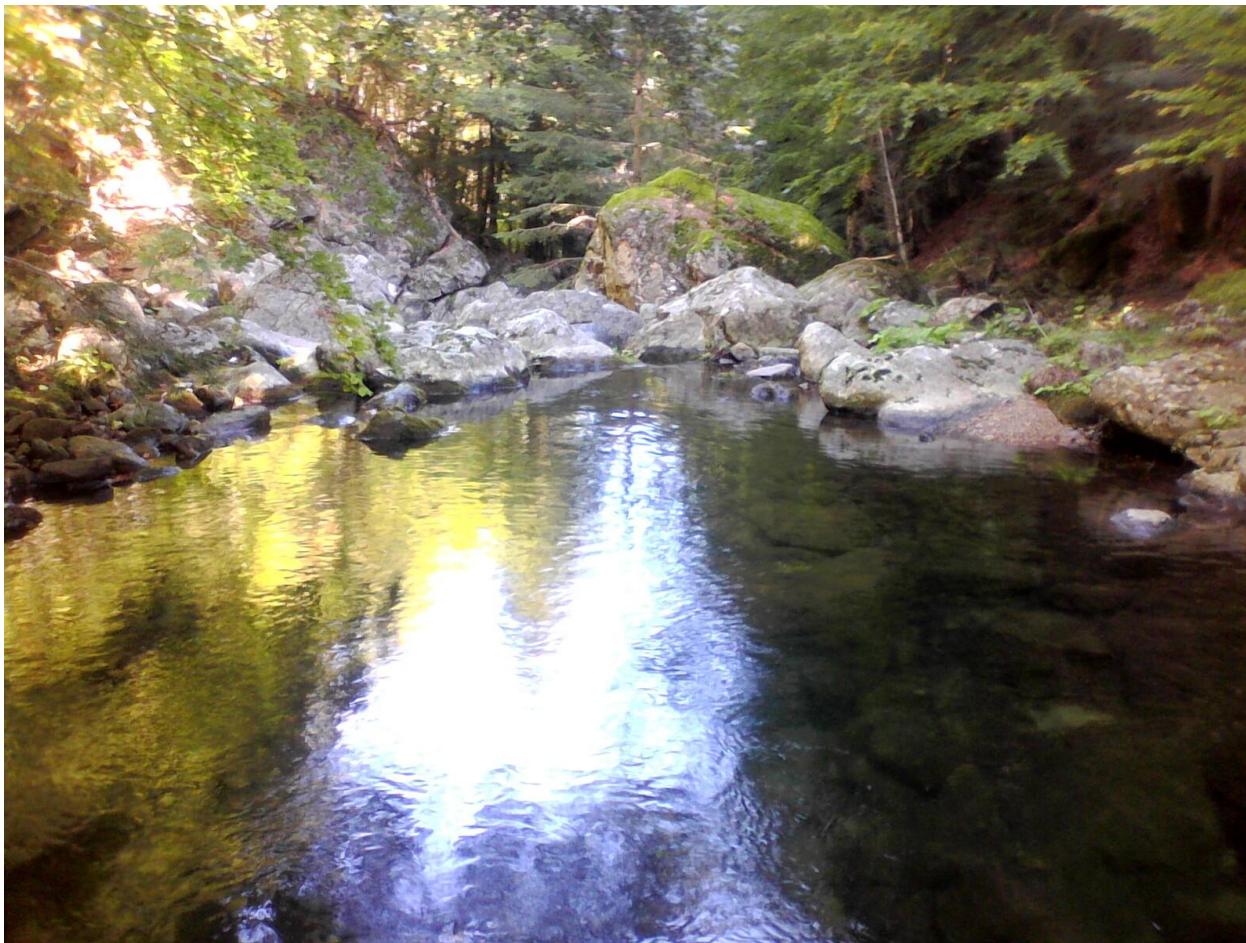
Window to the Tacina valley - Photo Raffaele Marchio





Monumental Tree: Downy oak “Kaya”, circumference at the base 6.50 meters - Photo Raffaele Marchio





The Soleo stream in an area of difficult access - Photo Raffaele Marchio





Soleo Valley in spring - Photo Raffaele Marchio





Wooden bridge in the Manulata park, Petronà - Photo Raffaele Marchio





Fall Foliage: dirt road towards “the Fairy Forest” - Photo Raffaele Marchio





Wild rose hips rich in vitamin C - Photo Raffaele Marchio





Soleo valley, the black dots in the distance are wild boars - Photo Raffaele Marchio





Wild places where the wolf reigns - Photo Raffaele Marchio



Fall Foliage: ferns also change color in autumn - Photo Raffaele Marchio





Passante snow-covered lake - Photo Raffaele Marchio



Bridge over the river to cross the aqueduct - Photo Raffaele Marchio





Fall Foliage: the bright colors of the beech trees in autumn - Photo Raffaele Marchio



The real winter of the Sila plateau, Tirivolo - Photo Raffaele Marchio





Forest barrack, Gariglione - Photo Raffaele Marchio





Mountain Ash at 1600 meters above sea level - Photo Raffaele Marchio





Waterfall of the Pisarello stream - Photo Raffaele Marchio



Window to the Tacina valley in late autumn - Photo Raffaele Marchio





Obelisk of the Wolf (Monolith) - Photo Raffaele Marchio





Boletus mushroom on the meadow in the Soleo valley - Photo Raffaele Marchio





Donkeys, roe deer, fallow deer, red deer, llamas inside the snow-covered Manulata park - Photo Raffaele Marchio



Giant twin white firs, Gariglione - Photo Raffaele Marchio





Ruins of the Piciaro, production of pitch from pine and fir trees - Photo Raffaele Marchio





Tacina lake in summer - Photo Raffaele Marchio





Valley of the Soleo covered with snow - Photo Raffaele Marchio





Wolf waterfall, stream Ritorta - Photo Raffaele Marchio





Fall Foliage: tree that seems to catch fire - Photo Raffaele Marchio





A black squirrel (zaccarella), typical of the Sila plateau - Photo Raffaele Marchio





The basin of the Marquise, Buturo - Photo Raffaele Marchio



Old cottage for drying chestnuts - Photo Raffaele Marchio





Meadow for grazing cows, Pisarello valley - Photo Raffaele Marchio



Manulata Park, Petronà - Photo Raffaele Marchio





Series of waterfalls before reaching the Unicorn waterfall - Photo Raffaele Marchio





A green lizard grabs the tail of another lizard - Photo Raffaele Marchio





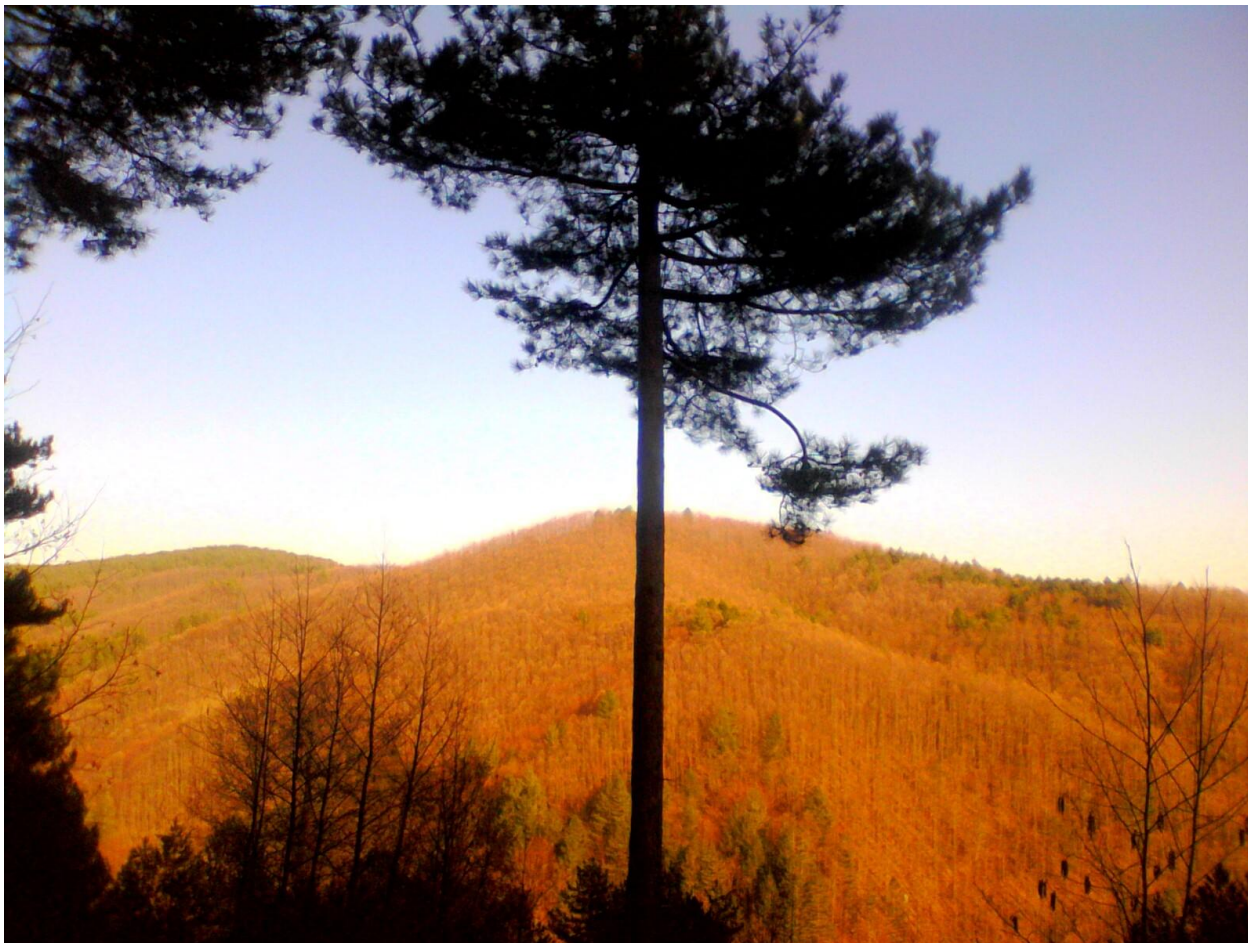
The Tacina river in the upper valley - Photo Raffaele Marchio





Snow White mushrooms - Photo Raffaele Marchio





In the distance mount Giove in autumn - Photo Raffaele Marchio



The Kingdom of Wolves: place with a notable presence of wolf dens - Photo Raffaele Marchio





Fire guard lookout - Photo Raffaele Marchio



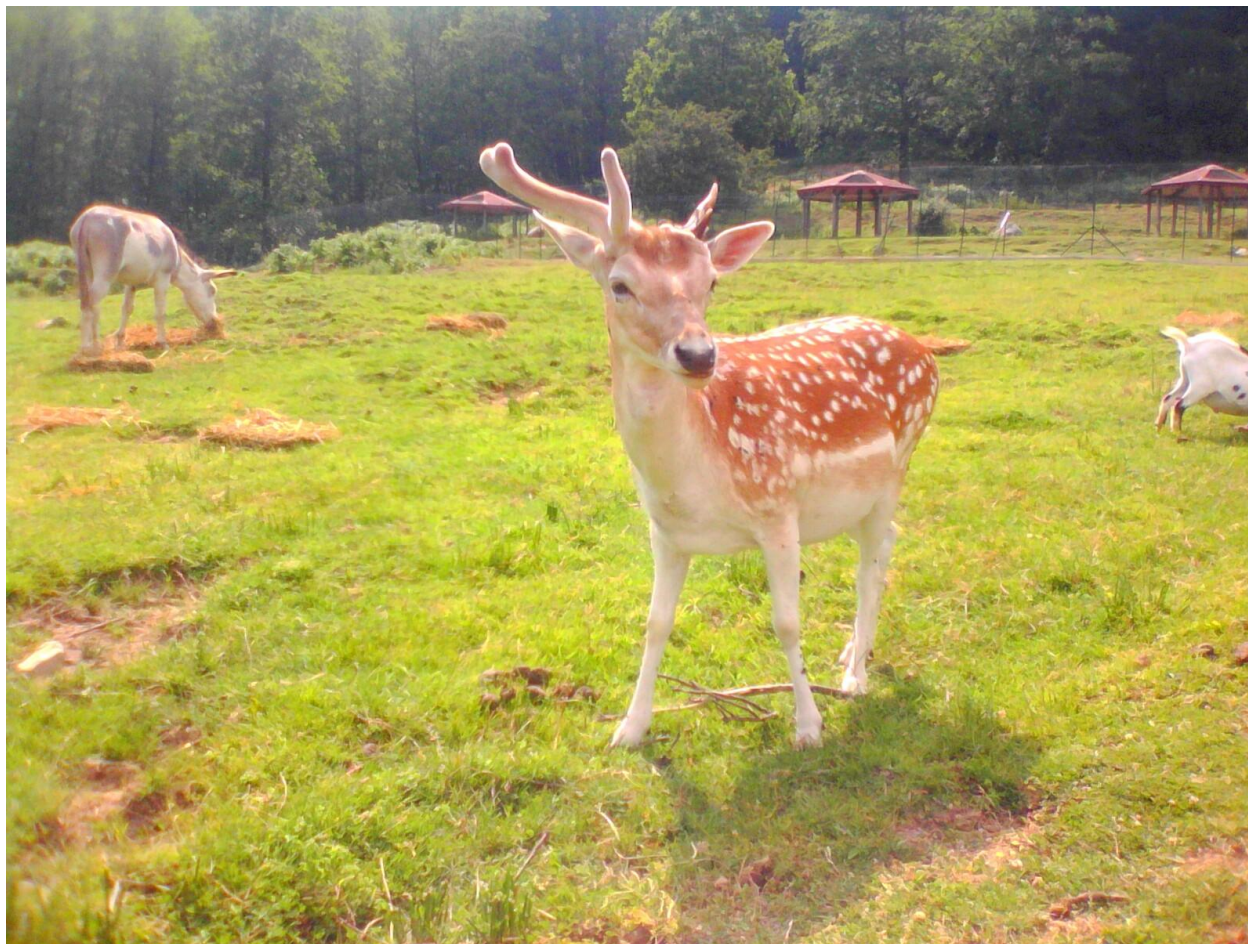
Frozen Manulata pond - Photo Raffaele Marchio





Giant downy oak in “The Fairy Forest” - Photo Raffaele Marchio





An antler fell on the roe deer in the park - Photo Raffaele Marchio





Cascade of the “Pink Grotto” - Photo Raffaele Marchio



The peaks of the Garigione seen from the Tacina valley - Photo Raffaele Marchio





Fairytale fountain, Carcarula, Petronà - Photo Raffaele Marchio



Rainbow on Mount Giove - Photo Raffaele Marchio





Vegetation above a quagmire at 1600 meters above sea level - Photo Raffaele Marchio





A wild boar approaches a shack - Photo Raffaele Marchio





Meadows in bloom in the upper Tacina valley - Photo Raffaele Marchio





Parasol mushrooms - Photo Raffaele Marchio





Cecita lake in summer - Photo Raffaele Marchio





Gorse in bloom - Photo Raffaele Marchio





Fall Foliage: Mount Giove in autumn - Photo Raffaele Marchio



Panorama seen from mount Reventino, in the distance the Tyrrhenian sea - Photo Raffaele Marchio





Source of water in a chestnut grove - Photo Raffaele Marchio





Ruins, tower of the Marquise - Photo Raffaele Marchio





Grazing cows resting - Photo Raffaele Marchio





Fall Foliage: in the distance the Malavista peak - Photo Raffaele Marchio





Boulder covered with centuries-old moss - Photo Raffaele Marchio





Mount Femminamorta seen from the Soleo valley - Photo Raffaele Marchio





Wolf waterfall, Buturo - Photo Raffaele Marchio





Wild strawberries - Photo Raffaele Marchio





Arvo lake at sunset - Photo Raffaele Marchio



**RAMA Association**

**PerNum 1001138720**

**[associazionerama11112020@gmail.com](mailto:associazionerama11112020@gmail.com)**

Upper valley of the Tacina river - Photo Raffaele Marchio